



 TAKE A LOOK AT THE PICTURES AND WORDS PRESENTED BELOW.



SCIENCE



SURPRISING



SUN



HEARS



ITALY



FOLLOWS



THREE



DISCOVER

1. NOW. LET'S READ THE STORY USING THOSE WORDS!

Galileo is a young professor who studies  \_\_\_\_\_.

One day, Galileo makes a  \_\_\_\_\_ discovery.

For hundreds of years humans have believed that the planets revolved around the Earth.

However, Galileo believes that the  \_\_\_\_\_ is the center of the solar system.

When the head of the university  \_\_\_\_\_ of Galileo's theory,

he is forced to leave  \_\_\_\_\_ forever.

Believing in Galileo, his assistant  \_\_\_\_\_ him on his adventure.

Together, with the assistant's cousin, the  \_\_\_\_\_ of them embark on a journey.

Will they  \_\_\_\_\_ the truth?



THE STORY TAKES PLACE IN ITALY, A COUNTRY IN SOUTHERN EUROPE. READ THE INSTRUCTIONS AND COLOR THE MAP. LET'S DISCOVER WHERE ITALY IS!

- POLAND IS NEXT → TO GERMANY. COLOR IT BLUE.
- CZECH REPUBLIC IS BETWEEN ↔ GERMANY AND POLAND. COLOR IT PINK.
- AUSTRIA IS BELOW ↓ CZECH REPUBLIC. COLOR IT ORANGE.
- AUSTRIA IS BETWEEN ↔ SWITZERLAND AND HUNGARY. COLOR BOTH COUNTRIES PINK.
- SWITZERLAND IS ABOVE ↑ ITALY. COLOR IT RED, WHITE AND GREEN. THE COLORS OF ITS FLAG!





 WATCH THE VIDEO AND LISTEN TO THE CHARACTERS: WHAT DO THEY DO?



Hi! My name is Galileo.  
I am the \_\_\_\_\_.



Hello there, I am Cosmas Green.  
I am a \_\_\_\_\_.



Hey, I'm Lyra. I am 'Cosmas' \_\_\_\_\_.





Welcome students. I am the  
\_\_\_\_\_ of the  
University. My name is  
Pandora.



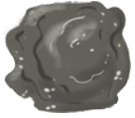
Who are you? I'm Hans, a  
crazy \_\_\_\_\_



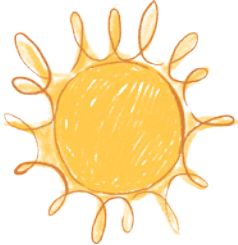
Nice to meet you all. I am the  
most recognized \_\_\_\_\_  
of Astronomy.



2. NOW. WATCH THE VIDEO AGAIN AND MATCH THE CHARACTERS WITH THE PLANETS.



METEORITE



SUN



EARTH



MARS



SATURN



MOON



PROFESSOR CALIXTO



PANDORA



GALILEO



HANS



LYRA



COSMOS GREEN





READ THE FOLLOWING SENTENCES AND PUT THEM IN THE CORRECT ORDER ACCORDING TO THE SEQUENCE OF EVENTS.

- 1 One day, Galileo makes an important discovery.
- 2 The assistant's cousin joins the journey. They are ready for the adventure!
- 3 The University forces Galileo to leave.
- 4 But Galileo believes that the Sun is the center of the System.
- 5 Galileo is a young professor who loves science.
- 6 Pandora, the head of University hears of Galileo's theory.
- 7 Humans think that the planets revolve around the Earth.
- 8 Cosmos Green, Galileo's assistant follows him to discover the truth.









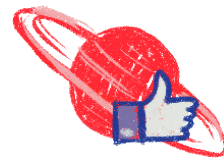

2. NOW. IMAGINE THE END OF THE STORY. CHOOSE THE MOST SUITABLE OPTION AND MAKE A DRAWING OF IT.

- GALILEO, HIS ASSISTANT AND COUSIN GO ON HOLIDAYS TO THE BEACH.
- GALILEO TELLS THE ASSISTANT AND HIS COUSIN TO LEAVE HIM ALONE.
- CLEOPATRA BECOMES THE QUEEN OF EGYPT AT THE PALACE.
- GALILEO MARRIES THE ASSISTANT'S COUSIN.
- GALILEO PROVES HIS THEORY IN FRONT OF THE PEOPLE OF ITALY..





LOOK AT THE CHART AND ANSWER THE QUESTIONS.

	PROFESSOR 	UNIVERSITY 	ASTRONOMY 	STUDENT 
GALILEO	✓	✓	✓	✗
COSMOS GREEN	✗	✓	✓	✓
LYRA	✗	✗	✗	✗
CALIXTO	✓	✗	✓	✗
PANDORA	✗	✓	✓	✗
HANS	✗	✗	✓	✗

1. Is Galileo an Astronomy professor?

*Yes, he is.*

2. Is Lyra an Astronomy lover?

*No, she isn't.*

3. Is Pandora's job at University?

.....

4. Is Cosmos a student?

.....

5. Are Lyra and Hans students?

.....

6. Are Galileo and Calixto professors?

.....

7. Is Lyra an Astronomy lover?

.....

8. Is Hans a professor?

.....

We use the Verb **TO BE** to show the status or characteristics of something or someone.

**SINGULAR**

**Affirmative:** She/He/It is

**Negative:** : She/He/It isn't (Is not)

**Interrogative:** Is she/he/it ....?

**PLURAL**

**Affirmative:** : They/we are

**Negative:** : They/ we aren't (are not)

**Interrogative:** Are they/ we .....?





**WORD SEARCH TIME!**  
SEARCH FOR THE WORDS YOU USED IN THE PREVIOUS EXERCISE.

GALILEO – UNIVERSITY – PROFESSOR- CALIXTO – LYRA – PLANETS – STUDENT  
COSMOS – ASTRONOMY – PANDORA

A T M I M X D G M C L T N L I D N L Z A  
J Y U U B T F O U S P L I F B I S T R R  
B V U I G O W O L T R C Q J L V V D Z B  
A O R E Z S F B N U P R O F E S S O R V  
R S X C C T F L B D I U T A W L T B T I  
P T E Q B Q C W L E N I B D P D P P Q Z  
A C G A L I L E O N L P P T H A M W D J  
N Q G Y I V Y T W T V F D Y X L Y U V C  
D D M D Y G W A X Q C D X X U Y X R P Q  
O B X X E P I X S V A V V O B R N U C E  
R M R O G L T H U T B V Q W E A H N O I  
A K G S G A J I X L R E E K T D G I G Y  
E F S P O N R P C K P O P M J M Q V C T  
M J T C X E X J A E B D N J I T H E P E  
Q K Z E G T W A Z Q G E V O X T Q R V N  
G C F H O S J Y K Q G I O H M J T S X Q  
Z C O S M O S C Z Z L F B I I Y M I K I  
V T Q I Q Z G U Q M O A W X S Z O T X M  
I M Y J J H C U L U F D Y U H F O Y R R  
Q G R K C A L I X T O C W U P H P X O D

1. NOW COMPLETE THE SENTENCES BELOW WITH ANY OF THE WORDS FORM  
THE WORD SEARCH PUZZLE. ONE EXAMPLE HAS BEEN DONE FOR YOU.

Galileo is a professor at University. He loves Astronomy.

Cosmos is Galileo's s\_\_\_\_\_, who is interested in science and p\_\_\_\_\_.

L\_\_\_\_\_ is Cosmo's cousin. She isn't a s\_\_\_\_\_.

The head of University, P\_\_\_\_\_, is also C\_\_\_\_\_ 's teacher.

There is a person at U\_\_\_\_\_ who doesn't believe in Galileo: C\_\_\_\_\_.



 GALILEO IS LEAVING THE CITY. HE WANTS TO SEND AN E-MAIL TO A FRIEND EXPLAINING THE SITUATION. CAN YOU HELP HIM? CHOOSE THE OPTIONS TO COMPLETE THE MESSAGE.

INVENT A NAME FOR GALILEO'S FRIEND



CHOOSE A SUBJECT

- Good Bye Rome.
- It's Holidays Time!
- I need to discover the truth


**NEW MESSAGE**
✕

NAME

SUBJECT

B I U      

CANCEL SEND

I am leaving the city to study the planets.

Two friends will help me to study the Universe.

I am going to visit the Pisa Tower in Italy.

Hope to see you soon!

Why don't you come?

I will write you back.