



Cleopatra lives in the Palace with her sister, Arsinoe and her father, Pharaoh Ptolemy. Before dying, the Pharaoh, the King of Egypt, hands the Sacred Key to Cleopatra, his younger daughter. This key is a very particular one as it unlocks all of the country's treasures.

This decision makes Arsinoe, Cleopatra's sister, feel envious because she should have been the one to receive the Sacred Key. From then on, she begins to concoct a plan to recover it.

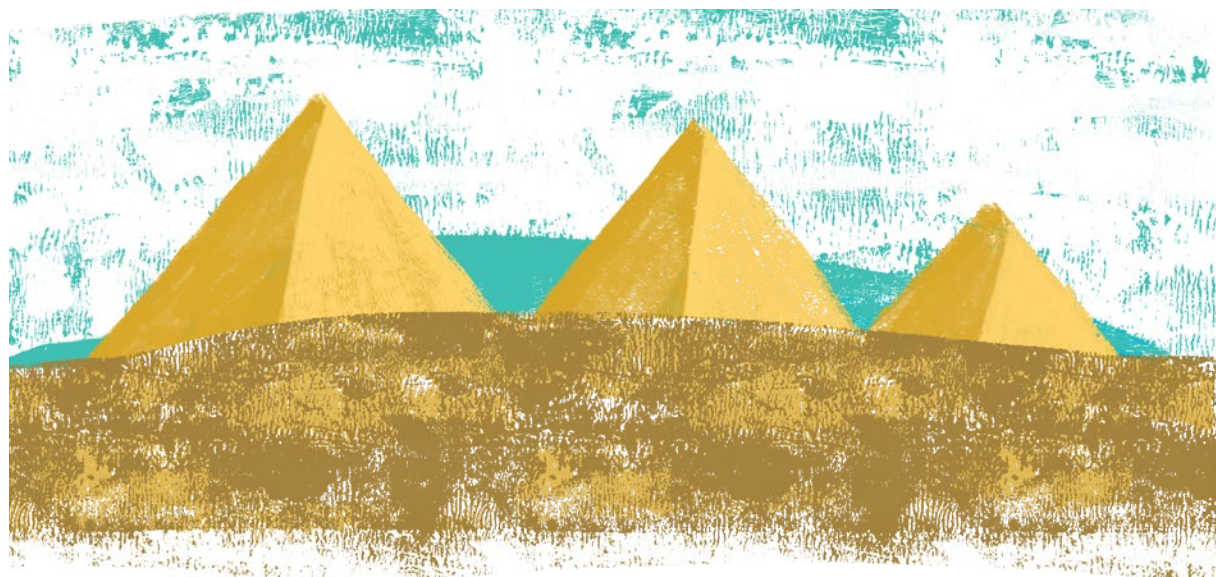
Feeling afraid of her new responsibility, Cleopatra decides to go for a walk. While wandering around she meets Bek, a young villager who sells fruit.

Cleopatra and Bek become very good friends and the villager helps Cleopatra to enjoy the simplest things in life.

At the palace, Arsinoe convinces Appi, one of the servants, to pass himself off as Juba, the King of Numidia. Arsinoe's plan is to obtain the key when Appi and Cleopatra become husband and wife.

Arsinoe tricks Cleopatra into believing that her nation is in desperate need of food supplies. King Juba has offered to help Egypt, but only if Cleopatra marries him.

Cleopatra has to make the most difficult choice: save Egypt from starvation or lose Bek's friendship forever.





TAKE A LOOK AT THE NEW WORDS BELOW AND MATCH THEM WITH THE CORRECT DEFINITIONS.



PALACE



PHARAOH



CHEST FULL OF JEWELS



CHAMBER



VILLAGER

A king of Egypt a long time ago.

A large box that is filled with gold necklaces, silver bracelets or shiny pearls.

The home of a king, queen or other rich and powerful person.

A person who lives in a small settlement of homes in an area outside the city.

A private room to store important and secret items.



## 1. NOW THAT YOU KNOW THE WORDS. LET'S READ THE STORY!

Cleopatra lives in the Palace with her sister Arsinoe and her father, Pharaoh Ptolemy.

One day, Pharaoh asks Cleopatra and Arsinoe to place a chest full of jewels inside a chamber. He locks it with a sacred key.

The sacred key can open the chamber, which holds all of the country's treasures, and the person who possesses it becomes the king or queen of Egypt.

The Pharaoh realizes that he is about to die so he decides to give the sacred key to Cleopatra.

Arsinoe feels jealous about her father's decision. Pharaoh begs Arsinoe to help Cleopatra lead the country.

Pharaoh finally dies and Cleopatra takes the sacred key and becomes the new princess.

Feeling afraid of her new responsibility, she decides to go for a walk. While wandering she comes across Bek, a young villager who sells fruit.

At the Palace, Arsinoe concocts a plan to obtain the key and become queen. Appi, one of the palace servants, will help her succeed by pretending to be King Juba of Numidia.

If there are any problems in Egypt, the New King Juba of Numidia will help. The only condition is to marry Cleopatra.

Cleopatra has to make a decision: She is in love with Bek but she has to save Egypt as her father told her.







WATCH THE VIDEO CLOSELY AND MATCH THE PICTURE OF THE CHARACTER WITH THEIR NAME AND THE ITEM YOU SEE.



ARSINOE



BROOM



APPI



SACRED KEY

PHARAOH  
PTOLEMY

CROWN



CLEOPATRA



FRUIT



BEK



BLACK CAT





2. NOW. WATCH IT AGAIN AND CIRCLE THE CORRECT INFORMATION IN THE BOX BELOW.

1. **Her Our His** name is Cleopatra.  
 She is the **princess king prince**.  
 She has got the **necklace bracelet key**.  
 She looks **worried happy cross** about her father's decision.

2. **Her His Their** name is Arsinoe.  
 She is Cleopatra's **brother sister niece**.  
 She has got a **cat rat hat**.  
 She looks **excited jealous blue** about her sister's new title.

3. **Her His Your** name is Appi.  
 He is the Palace **doorman cook servant**.  
 He has got a **broom fork shovel**.  
 He looks **scared excited angry** to become the King Juba of Numidia.





THE STORY OF CLEOPATRA IS MIXED UP.  
CAN YOU PUT IT IN THE CORRECT ORDER?

DRAW LINES BETWEEN THE BOXES. FOLLOW THE EXAMPLE GIVEN.

1

PHARAOH  
PTOLEMY

feels jealous of Cleopatra

decides to help Arsinoe by pretending  
to be King Juba of Numidia.

2

ARSINOE

the palace servant,

While wandering in the village  
she meets Bek, a young villager.

3

APPI

dies and gives Cleopatra  
the sacred key,

and he will help her be the  
best queen of Egypt.

4

CLEOPATRA

becomes Cleopatra's best  
friend

so she concocts a plan to obtain  
the key and become queen.

5

BEK

is scared about her father's  
decision and decides to go  
for a walk.

which opens a chamber with all  
of the country's treasures. Now  
Cleopatra is the new queen.

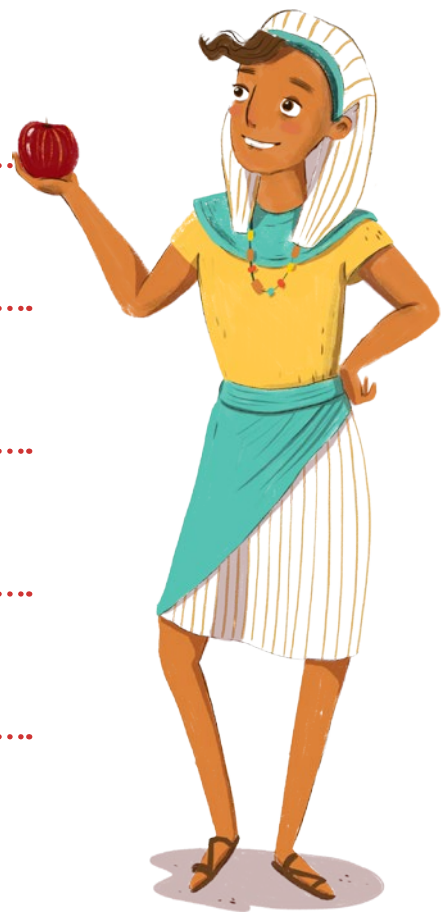






IN THE FOLLOWING CHART, WE HAVE ORGANIZED THE ACTIVITIES/ ACTIONS OF EACH CHARACTER. TAKE A LOOK AT IT AND ANSWER THE QUESTIONS.

	CLEOPATRA	ARSINOE	APPI	BECK
sweeps the floor	X	X	✓	X
helps other people	✓	X	X	✓
creates a plan to obtain the key	X	✓	✓	X
lives in the Palace	✓	✓	✓	X
sells fruit in the village	X	X	X	✓



1. What does Arsinoe do?

.....

2. What does Cleopatra do?

.....

3. What does Bek do?

.....

4. What does Appi do?

.....

5. Who helps other people?

.....



2. NOW. LOOK AT THE CHART AGAIN AND UNDERLINE THE CORRECT ANSWER.



1. Does Arsinoe sell fruit in the village?

Yes, she does. No, she doesn't.

2. Does Cleopatra sweep the floor?

Yes, she does. No, she doesn't.

3. Do Bek and Cleopatra help other people?

Yes, they do. No, they don't.

4. Does Appi live in the palace?

Yes, he does. No, he doesn't.

5. Does Appi create a plan to obtain the key?

Yes, he does. No, he doesn't.

### GrammarSpot

We use the simple present tense to talk about general facts, habitual events or instructions. In this activity, you can read about the characters' routines (habitual activities).

**Affirmative:** He/She/It + verb (-s / -es)

**Negative:** He/She/It + does not (doesn't) + verb (in the infinitive form)





**Interrogative:** Does + he/she/it + verb (in the infinitive form)?







ARSINOE HAS SHARED HER DAILY ROUTINE WITH YOU.  
READ IT AND COMPLETE THE SENTENCES ABOUT HER.

	MORNING	AFTERNOON	NIGHT
ARSINOE	Pet the Cat/ in the Bedroom	Read a Book/ in the garden	Practise singing/ in the shower
			

In the morning, Arsinoe .....


In the afternoon, she .....

At night .....





2. NOW. IMAGINE A DAY IN THE LIFE OF BEK. CAN YOU GUESS HIS ROUTINE?

BEK	MORNING	AFTERNOON	NIGHT
			

3. DRAW IT AND WRITE IT DOWN. HERE ARE SOME OPTIONS TO HELP YOU:



- Clean the fruit / in his shop
- Skateboard / in the park
- Read comics/ in his bed
- Swim / in the pool of an abandoned palace
- Make paper planes / to play with Cleopatra



In the morning, Bek .....

In the afternoon, he .....

At night .....



ONE MORNING. ARSINOE TEACHES CLEOPATRA HOW TO SING. CLEOPATRA FEELS SCARED BECAUSE SHE THINKS SHE CAN'T DO IT. APPI HELPS THE GIRLS DURING THE LESSON.

Arsinoe: The queen of Egypt must sing beautifully!

Cleopatra: No... I can't do it!

Appi: Yes, you can!

Arsinoe: No, you can't.

Appi: Yes, she can.

Cleopatra: Yes, I can.

Arsinoe: Can you do it?

Appi: I can do it.

Cleopatra: Can you do it?

Appi: Can I do it?

Arsinoe: No, you can't!

Cleopatra: I will do it. I'm a good singer!

Appi: I am a better singer.

Arsinoe: But I am the best singer.

Appi: But I am a better singer.

Arsinoe: And I am the best singer.

Cleopatra: Well... I am fast.

Appi: I am faster!

Arsinoe: And I am the fastest.

Cleopatra: I am intelligent!

Arsinoe: I'm more intelligent.

Appi: And I am taller than you. In fact, I am the tallest!

